



AB109 Realignment Monthly Stats November 2015

Post-Release Community Supervision (PCS)

Releases from Prison*

from 10/1/11 - 11/30/15 = 5452

2015 YTD = 757

2015 Monthly Avg = 69

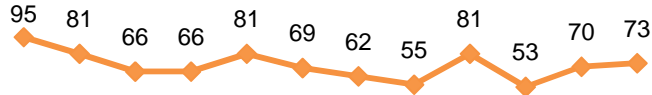
2014 Monthly Avg = 96

Currently Supervised:

Actively Supervised	1241
On Active Warrant (includes 292 ICE warrants)	598
Total	1839

Completions:

1 Yr Mandatory Termination	1974
Other Discharges/Transfers	1639
Total	3613



Dec Jan Feb Mar Apr May Jun Jul Aug Sep Oct Nov 2015

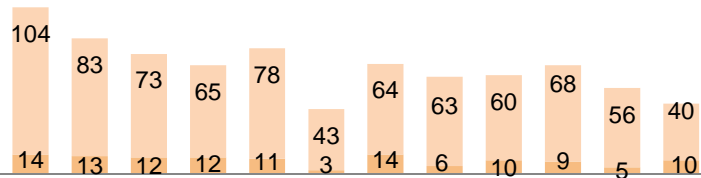
*Based on CDCR's projected release dates and are subject to change. Numbers reflect the most current release date information.

Warrants

2015 YTD = 798

2015 Monthly Avg = 73

36.30% of individuals had at least one warrant issued since 10/1/2011.



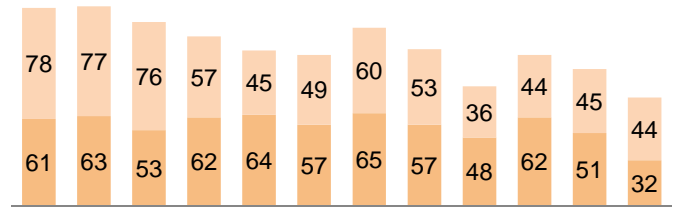
Dec Jan Feb Mar Apr May Jun Jul Aug Sep Oct Nov 2015
■ Never Reported ■ Reported

Revocations

2015 YTD = 1200

2015 Monthly Avg = 109

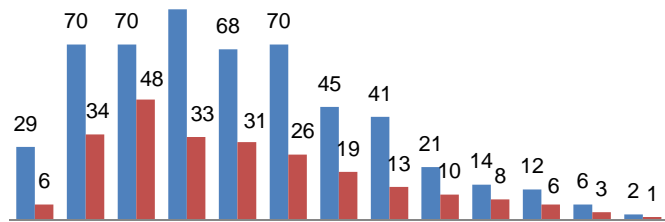
39.95% of individuals had at least one revocation issued since 10/1/2011.



Dec Jan Feb Mar Apr May Jun Jul Aug Sep Oct Nov 2015
■ NLV Arrest ■ Technical Violation

Prop. 47 Terminations

Nov '14- Nov '15 = 770

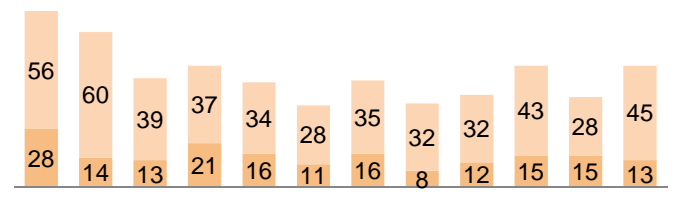


Nov Dec Jan Feb Mar Apr May Jun July Aug Sept Oct Nov 2014 2015
■ PCS ■ MS

Flash Incarcerations

2015 YTD = 567

2015 Monthly Avg = 52



Dec Jan Feb Mar Apr May Jun Jul Aug Sep Oct Nov 2015
■ NLV Arrest ■ Technical Violation

Mandatory Supervision (MS)

Individuals with MS Convictions

from 10/1/11 - 11/30/15 = 2781

2015 YTD = 417

2015 Monthly Avg = 38

2014 Monthly Avg = 58

Currently Supervised:

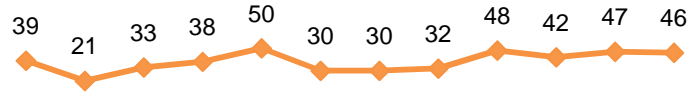
Actively Supervised (Released from Jail)	501
On Active Warrant as of November 30, 2015	283
Total	784

Awaiting Supervision:

Sentenced (still in custody)	198
------------------------------	-----

Completions:

MS Case Terminated/Expired/Other	1799
----------------------------------	------



Dec Jan Feb Mar Apr May Jun Jul Aug Sep Oct Nov 2015