

AGENDA

REGULAR MEETING ORANGE COUNTY JUVENILE JUSTICE COORDINATING COUNCIL SB 823 SUBCOMMITTEE



Thursday, June 3, 2021, 2:00 P.M.

MEETING HELD BY ZOOM AND TELECONFERENCE ONLY

****Pursuant to the provisions of California Governor's Executive Order N-29-20, issued on March 17, 2020, this meeting will be held by Zoom and teleconference. Members of the public may attend and participate by following the instructions below.****

STEVE SENTMAN, Chair
Probation

KIMBERLY DOYLE
District Attorney

LYNN GARRETT
Education Representative

LAURA JOSE
Public Defender

STEVEN KIM
Community Member

MEGHAN MEDLIN
Community Member

JOANNE MOTOIKE
Juvenile Court

NAZLY RESTREPO
Community Member

RAYMOND SANCHEZ
Community Member

KEN SANTINI
Social Services Agency

DAWN SMITH
Health Care Agency

*The Orange County Juvenile Justice Coordinating Council SB 823 Subcommittee welcomes you to this meeting. This agenda contains a brief general description of each item to be considered. The Subcommittee encourages your participation. If you wish to speak on an item contained in the agenda, please press *9 following the Chair's invitation from the public to speak. Once acknowledged and prompted by the Chair or Clerk, you may begin to speak. Except as otherwise provided by law, no action shall be taken on any item not appearing in the agenda. When addressing the Subcommittee, please state your name for the record prior to providing your comments.*

**** INSTRUCTIONS FOR ATTENDING THE MEETING BY TELECONFERENCE****

Members of the public may observe and participate in the meeting telephonically. To attend the meeting via teleconference please call:

- iPhone one-tap: US: US: +1 669 900 9128, 896 3340 8323#, 137525# or
- +1 346 248 7799, 896 3340 8323#, 137525#
- Or Telephone: Dial (for higher quality, dial a number based on your current location):
+1 669 900 9128 or +1 253 215 8782 or +1 346 248 7799 or +1 312 626 6799 or +1 646 558 8656 or
+1 301 715 8592

Webinar ID: 896 3340 8323

Passcode: 137525 (once you enter this code, you should be automatically connected to the call; you will remain on the line until meeting begins).

<https://us02web.zoom.us/j/89633408323?pwd=Z0pmbzdKMVpiaUxmUUIIWS82a01qdz09>

AGENDA

****In compliance with the Americans with Disabilities Act, those requiring accommodation for this meeting should notify the Clerk of the Board's Office 72 hours prior to the meeting at (714) 834-2206****

All supporting documentation is available for public review in the office of the Clerk of the Board of Supervisors located in the Hall of Administration Building, 333 W. Santa Ana Blvd., 10 Civic Center Plaza, Room 465, Santa Ana, California 92701 during regular business hours, 8:00 a.m. - 5:00 p.m., Monday through Friday.

ADMINISTRATIVE MATTERS: (Items 1 - 4)

At this time, members of the public may ask the Subcommittee to be heard on the following items as those items are called.

1. Welcome and Introductions
2. Discussion and approval of need for designees/alternates
3. Discussion of services and programs provided by member entities
4. Discussion of Subcommittee member group reports

PUBLIC & SUBCOMMITTEE COMMENTS:

At this time members of the public may address the Orange County Juvenile Justice Coordinating Council SB 823 Subcommittee on any matter not on the agenda but within the jurisdiction of the Subcommittee. The Subcommittee or Chair may limit the length of time each individual may have to address the Subcommittee.

PUBLIC COMMENTS:

SUBCOMMITTEE COMMENTS:

ADJOURNMENT

NEXT MEETING

Thursday, June 17, 2021

Regular Meeting, 2:00 P.M.



OC Health Care Agency Services in Probation Facilities

**Clinical Evaluation & Guidance Unit Probation (CEGU Probation)
Youth Reporting Center Central (YRC Central)
Youth Reporting Center North (YRC North)**

June 3, 2021

CEGU Probation

- CEGU Probation serves all incarcerated youth in:
 - Juvenile Hall
 - Youth Guidance Center (YGC)
 - Youth Leadership Academy (YLA)
- Staffing
 - 33 Behavioral Health Professionals including:
 - 1 Full Time Psychiatrist
 - 4 UCI Psychiatric Fellows
 - 9 Psychologists
 - 4 Psychology Interns
 - 10 Behavioral Health Clinicians
 - 1 Mental Health Specialist
 - 4 Peer Specialists

CEGU Probation staff may be assigned to specific facilities. However, staff can provide services in any facility if there is a need for a staff member's particular expertise or there's a clinical need to follow youth between facilities.

CEGU Probation

- All youth detained in a juvenile probation facility are assigned a CEGU clinician and a peer specialist. Individual and family therapy is available to all youth.
- Clinical services are client driven and evidence based. CEGU Probation utilizes a variety of treatment modalities, including:
 - Cognitive Behavioral Therapy (CBT)
 - Trauma-Focused Cognitive Behavioral Therapy (TF-CBT)
 - Eye Movement Desensitization Reprocessing (EMDR)
 - Motivational Interviewing
 - Integrative Treatment of Complex Trauma for Adolescents (ITCT-A)
 - Dialectical Behavior Therapy (DBT)
- Group therapy is available to all youth to foster support and encouragement from one another. Groups include:
 - Substance Use Treatment and Trauma (Seeking Safety)
 - Anger Management
 - Healthy Relationships
 - Word on the Street
 - Ending the Game
 - Mindfulness
 - Hip Hop & Poetry
 - Expressive Arts
 - Sex Offender Treatment
 - Parenting Group
 - Ready, Set, Goals
 - Teatime in the Meantime
 - Sewing
 - Self-Care

CEGU Probation

- Reentry Services
 - Reentry services start with discharge planning prior to the youth's release date as treatment needs evolve.
 - Reentry program will begin working with youth to build a therapeutic relationship prior to having a release date to ensure there are no gaps in services.
 - CEGU assists youth with the following reentry services:

▪ Linkage to Mental Health Services	▪ Medical Insurance
▪ Linkage to Substance Use Treatment	▪ Identification
▪ Linkage to Psychiatric Services/Medication Support	▪ Driver's License
▪ Linkage and Transportation to MAT	▪ Employment
▪ Linkage to Housing Support	▪ Public Assistance Aid
	▪ Independent Living Skills
	▪ Prosocial Activities
	▪ Education/Vocational

Youth Reporting Centers

- HCA YRC staff serve all Probation youth referred to YRC Central and YRC North.
- Mental health staff provide assessment and treatment services to youth in collaboration with the Probation Department and the Orange County Department of Education.
- Staffing at YRCs:
 - 10 Behavioral Health Professionals including:
 - 3 Behavioral Health Clinicians
 - 1 Psychologist
 - 3 Psychology Interns
 - 1 Mental Health Specialist
 - 2 Peer Specialists
 - Access to Psychiatrist for medication evaluation

Youth Reporting Centers

- Mental Health Services Include:
 - Weekly Individual (one-on-one), Family, Case Management, Rehabilitation Services, Crisis Services, Medication Evaluations, Psychological Testing and Group Services.
 - All youth are assigned a YRC clinician and a peer specialist.
 - Group therapy is available to all youth multiple times per week. A monthly calendar is provided to all youth and YRC staff, assisting youth with substance use, anger management, healthy relationships, and developing independent living skills.
 - Clinical services are client driven and evidence based. YRC staff utilize a variety of treatment modalities, including:
 - Motivational Interviewing
 - Eye Movement Desensitization and Reprocessing
 - Strength-Based Therapy
 - Solution-Focused Brief Therapy
 - Dialectical Behavior Therapy (DBT)
 - Existential Therapy
 - Cognitive Behavioral Therapy
 - Trauma-Informed – Cognitive Behavioral Therapy
 - Mindfulness-Based Cognitive Therapy

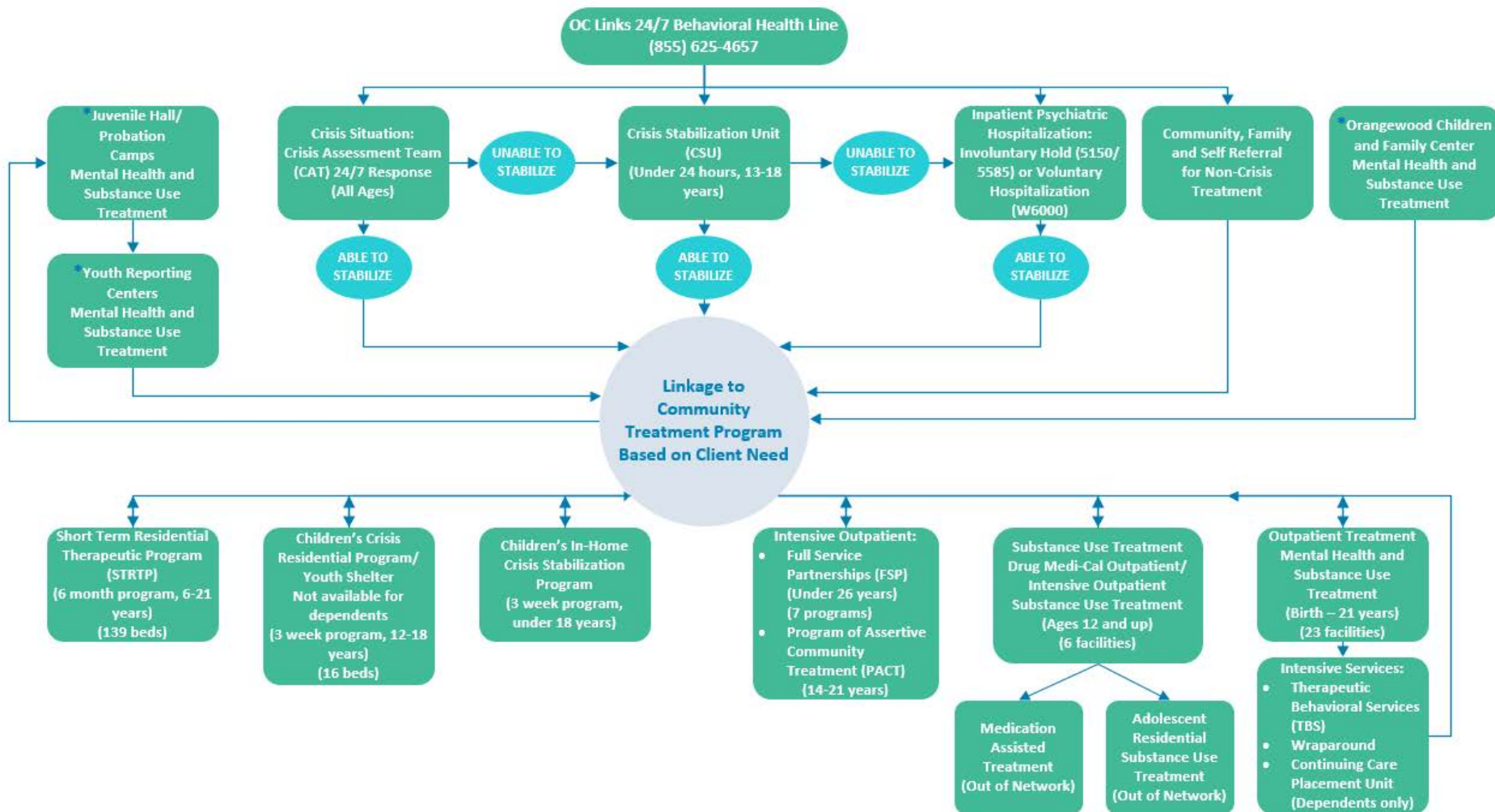
Youth Reporting Centers

- Reentry Services
 - Plans for reentry into the community begins immediately at intake. Clinicians discuss the process of treatment and encourage youth to focus on short and long-term goals in relation to their mental health and personal growth.
 - Clinicians and peer specialists work hand in hand to educate youth on the support available in the community to help meet their goals. Peer staff follow youth into the community to ensure appropriate linkage to resources prior to discharge.
 - YRCs assist youth with the following reentry services:

▪ Linkage to Mental Health Services	▪ Medical Insurance
▪ Linkage to Substance Use Treatment	▪ Identification
▪ Recovery & Supportive Services	▪ Driver's License
▪ Linkage to Psychiatric Services/Medication Support	▪ Public Assistance Aid
▪ Linkage to Housing Support	▪ Independent Living Skills
▪ Education/Vocational	▪ Prosocial Activities
	▪ Employment

Children & Youth Behavioral Health Services Continuum of Care

CHILDREN & YOUTH BEHAVIORAL HEALTH SERVICES CONTINUUM OF CARE



Most services are available to all Children and Youth in Orange County. Some services may require Medi-Cal eligibility.

Revised 05/26/2021

Questions

- Contact Information

Dawn M. Smith, LCSW

Division Manager

Children and Youth Behavioral Health

dawnsmith@ochca.com

(714) 834-3543



TEMPLATE ONLY
Juvenile Justice Realignment Block Grant
Annual Plan

Date: May 17, 2021

County Name: Orange

Contact Name: Chief Probation Officer Steve Sentman

Telephone Number: 714-645-7001

E-mail Address: steve.sentman@prob.ocgov.com

Background and Instructions:

Welfare & Institutions Code Section(s) 1990-1995 establish the Juvenile Justice Realignment Block Grant program for the purpose of providing county-based care, custody, and supervision of youth who are realigned from the state Division of Juvenile Justice or who would otherwise be eligible for commitment to the Division of Juvenile Justice prior to its closure.

To be eligible for funding allocations associated with this grant program, counties shall create a subcommittee of the multiagency juvenile justice coordinating council to develop a plan describing the facilities, programs, placements, services, supervision and reentry strategies that are needed to provide appropriate rehabilitative services for realigned youth.

County plans are to be submitted and revised in accordance with WIC 1995, and may be posted, as submitted, to the Office of Youth and Community Restoration website.

TEMPLATE ONLY

Contents:

Part 1: Subcommittee Composition

Part 2: Target Population

Part 3: Programs and Services

Part 4: Juvenile Justice Realignment Block Grant Funds

Part 5: Facility Plan

Part 6: Retaining the Target Population in the Juvenile Justice System

Part 7: Regional Efforts

Part 8: Data

TEMPLATE ONLY

Part 1: Subcommittee Composition (WIC 1995 (b))

List the subcommittee members, agency affiliation where applicable, and contact information:

Agency	Name and Title	Email	Phone Number
Chief Probation Officer (Chair)	Steve Sentman	Steve.sentman@prob.ocgov.com	645-7001
District Attorney's Office Representative	Kimberly Doyle		
Public Defender's Office Representative	Laura Jose		
Department of Social Services Representative	Ken Santini		
Department of Mental Health	Dawn Smith		
Office of Education Representative	Lynn Garrett		
Court Representative	Judge Joanne Motoike		
Community Member	Meghan Medlin		
Community Member	Nazly Restrepo		
Community Member	Steven Kim		
Additional Subcommittee Participants			
Community Member	Raymond Sanchez		

TEMPLATE ONLY

--	--	--	--

Part 2: Target Population (WIC 1995 (C) (1))

Briefly describe the County's realignment target population supported by the block grant:

--

Demographics of identified target population, including anticipated numbers of youth served, disaggregated by factors including age, gender, race or ethnicity, and offense/offense history:

TEMPLATE ONLY

Describe any additional relevant information pertaining to identified target population, including programs, placements and/or facilities to which they have been referred.

TEMPLATE ONLY

Part 3: Programs and Services (WIC 1995 (c)(2))

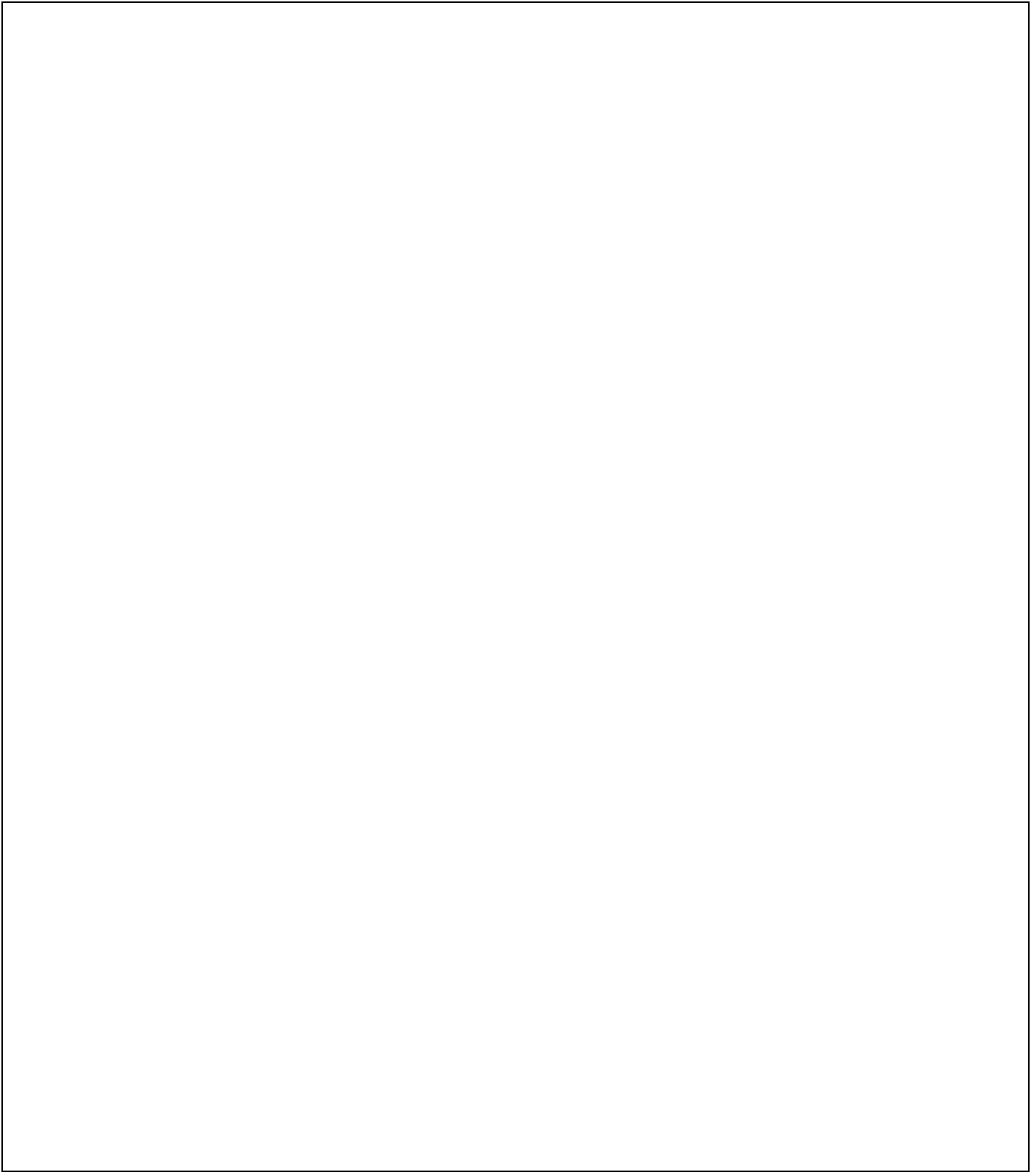
Provide a description of the facilities, programs, placements, services and service providers, supervision, and other responses that will be provided to the target population:

TEMPLATE ONLY

Part 4: Juvenile Justice Realignment Block Grant Funds (WIC 1995 (3)(a))

Describe how the County plans to apply grant funds to address the mental health, sex offender treatment, or related behavioral or trauma-based needs of the target population:

TEMPLATE ONLY



TEMPLATE ONLY

Describe how the County plans to apply grant funds to address support programs or services that promote healthy adolescent development for the target population: (WIC 1995 (3) (B))

Describe how the County plans to apply grant funds to address family engagement in programs for the target population: (WIC 1995 (3) (C))

TEMPLATE ONLY

Describe how the County plans to apply grant funds to address reentry, including planning and linkages to support employment, housing and continuing education for the target population: (WIC 1995 (3) (D))

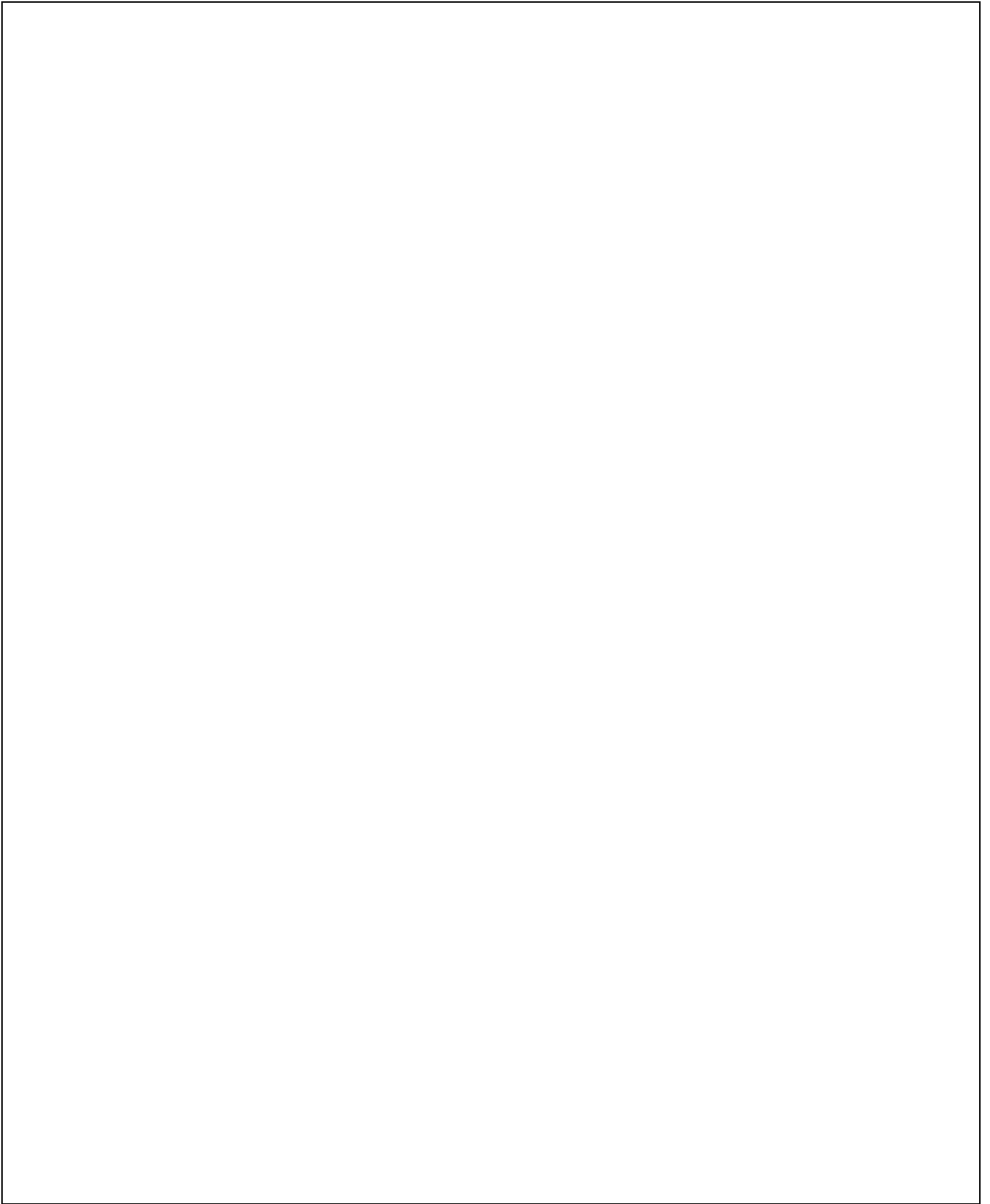
TEMPLATE ONLY

A large, empty rectangular box with a thin black border, occupying the majority of the page below the header and above the footer. It is intended for user input or content.

TEMPLATE ONLY

Describe how the County plans to apply grant funds to address evidence-based, promising, trauma-informed and culturally responsive services for the target population: (WIC 1995 (3) (E))

TEMPLATE ONLY

A large, empty rectangular box with a thin black border, occupying the majority of the page. It is intended for content, but currently contains nothing.

TEMPLATE ONLY

Describe whether and how the County plans to apply grant funds to include services or programs for the target population that are provided by nongovernmental or community-based providers: (WIC 1995 (3) (F))

TEMPLATE ONLY

A large, empty rectangular box with a thin black border, occupying the majority of the page. It is intended for a facility plan drawing or diagram.

Part 5: Facility Plan

TEMPLATE ONLY

Describe in detail each of the facilities that the County plans to use to house or confine the target population at varying levels of offense severity and treatment need, and improvements to accommodate long-term commitments. Facility information shall also include information on how the facilities will ensure the safety and protection of youth having different ages, genders, special needs, and other relevant characteristics. (WIC 1995 (4))

TEMPLATE ONLY

Part 6: Retaining the Target Population in the Juvenile Justice System

Describe how the plan will incentivize or facilitate the retention of the target population within the jurisdiction and rehabilitative foundation of the juvenile justice system, in lieu of transfer to the adult criminal justice system: (WIC 1995 (5))

TEMPLATE ONLY

Part 7: Regional Effort

Describe any regional agreements or arrangements supported by the County's block grant allocation: (WIC 1995 (6))

Part 8: Data

Describe how data will be collected on youth served by the block grant: (WIC 1995 (7))

TEMPLATE ONLY

Describe outcome measures that will be utilized to determine the results of the programs and interventions supported by block grant funds: (WIC 1995 (7))